

MONTHLY MEMBERSHIP PROGRESS REPORT

LOCATION REP OF BANGLADESH

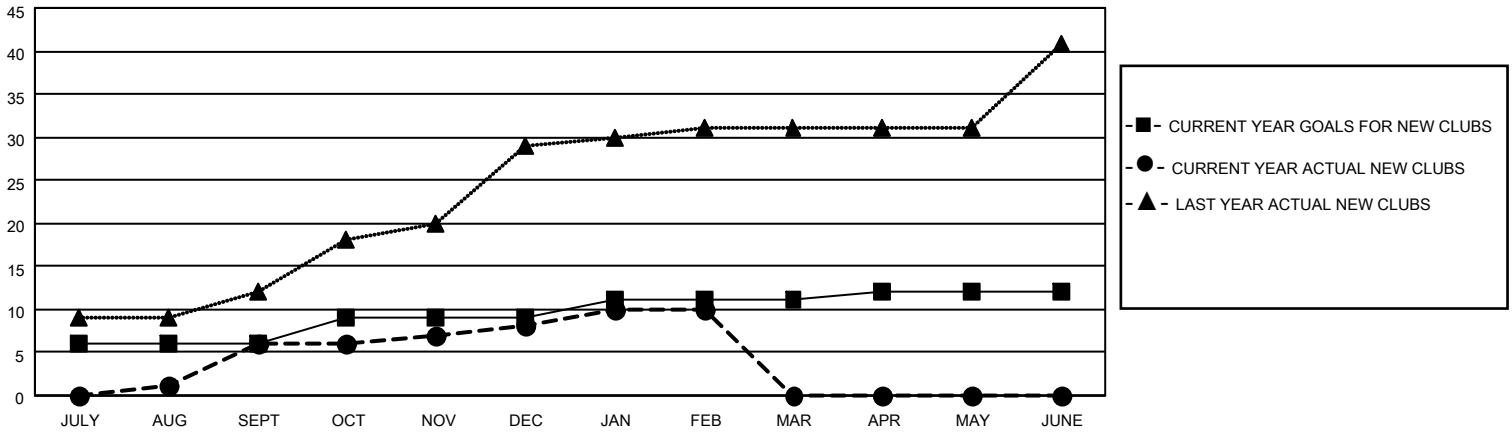
District 315A1

Results as of: 2/28/2022

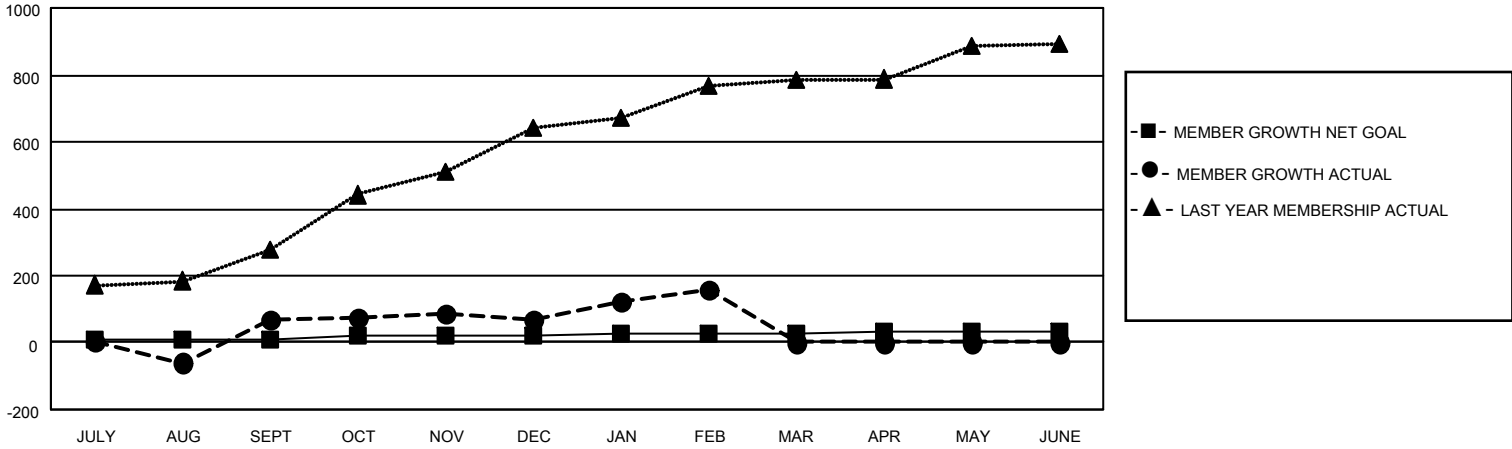
Clubs			
RESULTS FOR 2021-2022			
QUARTER	NEW CLUB GOAL	NEW CLUBS	DROPPED CLUBS
JULY/AUG/SEPT	6	6	5
OCT/NOV/DEC	3	2	3
JAN/FEB/MAR	2	2	0
APR/MAY/JUNE	1	0	0

Members			
RESULTS FOR 2021-2022			
QUARTER	MEMBER GROWTH NET GOAL	MEMBER GROWTH ACTUAL	DROPPED MEMBERS ACTUAL (including transfers)
JULY/AUG/SEPT	10	264	182
OCT/NOV/DEC	10	150	143
JAN/FEB/MAR	5	106	17
APR/MAY/JUNE	5	0	0

GOALS AND ACTUAL NEW CLUBS CUMULATIVE



GOALS AND ACTUAL MEMBERS CUMULATIVE



DROPPED CLUBS: 8

70 CLUBS OF 147 ADDED 1 OR MORE NEW MEMBERS

GENDER DISTRIBUTION

MALE	2,765 (77.32%)
FEMALE	811 (22.68%)
NON BINARY	0 (0.00%)
PREFER NOT TO ANSWER	0 (0.00%)

DROPPED MEMBERS

[CLICK HERE FOR CUMULATIVE MEMBERSHIP DATA](#)

DECEASED	4
CLUB CANCELLED	148
OTHER	190
TOTAL	342

TOTAL FAMILY UNIT MEMBERS 1,808

FAMILY MEMBERS PAYING HALF DUES 1,125